

PULSAR

MANUAL

Read this manual carefully before using and keep for future reference. Visit www.moon-sport.com for manual updates.

FEATURES

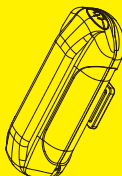
- 1 (15 chips) COB high brightness red LED
- 2 AAA alkaline batteries
- 2 steady modes, 3 flashing modes
- Quick release universal bracket (fits all round and AERO style bars)
- Side visibility
- Water resistant (IPX 4)

CONTENTS

PULSAR
2 AAA alkaline batteries
RB-22 (Universal bracket)
2 O-rings for mounting:
RS-G for #20-35mm
RS-H for #35-52mm
BK-21 (Belt clip)

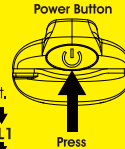
Optional accessories:

RB-19 (Rear rack bracket)
RB-21 (Saddle rail bracket)
RB-23 (Helmet bracket)
RB-27 (GoPro mount adapter)



OPERATION

1. Press power button to turn on the light.
2. Press power button to choose modes.
3. Double click power button to toggle between steady and flashing modes.
4. Press power button for 1 sec to turn off the light.



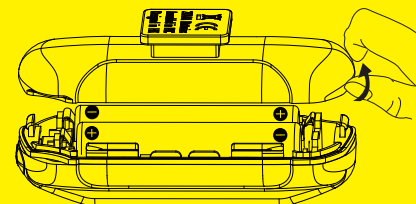
RUNTIME

	Mode1	Mode2	FL1	FL2	FL3
LUMEN	12	25	12	25	17
H:MIN	68:00	43:00	150:00	110:00	115:00
1M LUX	11	/	/	/	/
2M LUX	3	/	/	/	/
10M LUX	0.1	/	/	/	/



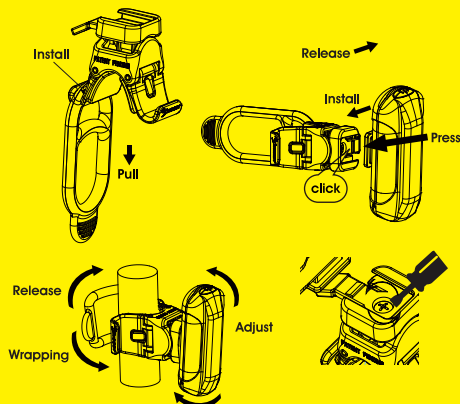
BATTERIES CHANGING

1. Open the bottom case with finger.
 2. Install batteries align with "+" and "-" poles.
 3. Install the bottom case.
- * Do not mix new and old batteries.
 - * Install batteries in correct direction.
 - * Remove batteries from light for storage.



SEATPOST MOUNTING

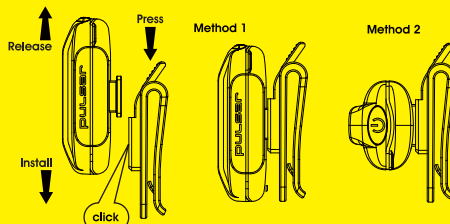
1. Choose the strap to fit in the seatpost.
2. Make sure the strap is click in place of the hook.
3. Hold the light on the seatpost.
4. Wrapping rubber strap around seatpost and stretching strap around hook to secure.
5. Slide the light forward onto bracket until it clicks into place.
6. Press down release lever to remove.



7. Adjust the horizontal/vertical beam angle when mounted on the handle bar/seatpost, loosen the screw knob and spin the light left to right / band the light up or down for your preferred angle, then tighten the screw knob to secure the light in place.

BELT CLIP MOUNTING

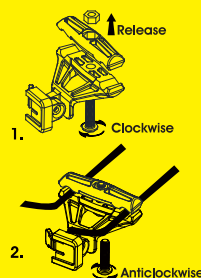
1. Slide light forward onto belt clip until it clicks into place.
2. Press down release lever to remove.



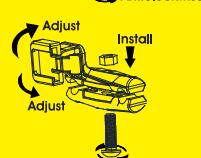
SADDLE RAIL MOUNTING (Optional)

1. Loosen the screws in the saddle bracket with the Allen key.
2. Clamp the bracket onto the saddle rail.
3. Align the screw holes, using the Allen key to tighten the bracket.
4. Slide light forward onto bracket until it clicks into place.
5. Press down release lever to remove.
6. Twist the light body to adjust the vertical angle.

Method 1



Method 2



WARNING

- * Understand country lighting laws and regulations before use.
- * Do not shine directly in the eyes.
- * Light may get hot when in use.
- * Adjust the angle downward to prevent from blinding the oncoming vehicles on the public roads.
- * Do not submerge the battery or the whole light into water.
- * Do not dismantle the light which will void warranty.
- * Do not leave the light on and unattended.
- * Keep the light away from fire and combustible materials.

WARRANTY

MOON Lights are covered by a ONE YEAR LIMITED WARRANTY from the date of purchase is free from defects in material and workmanship. This warranty does not apply to damage due to heat, physical damage resulting from abuse, neglect, improper repair, improper fit, or alterations of the fixture. This covers the lights and cables only. Batteries are covered by 120 days warranty not including battery normal wear.

All customers should contact the local dealer or regional distributor for warranty service. To make a claim, first contact original dealer or distributor. Some issues may be resolved upon the initial call. If return of the product is necessary, use traceable method such as FedEx or UPS. MOON is not responsible for lost or misdirected packages.

Please include your full contact information (name, address, phone number, and email [if applicable]), and a description of the issue.

For more information please contact us at cs@moon-sport.com

ONLINE WARRANTY REGISTRATION

Visit the following link for online warranty registration:
www.moon-sport.com/warranty