

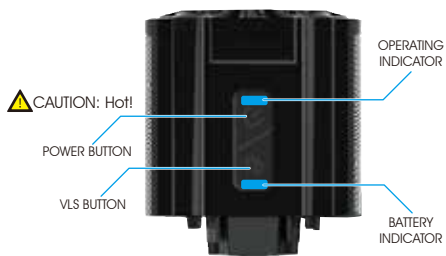
FEATURES

- * Boost mode
- * Dual angle beam
- * Day flash mode
- * Light mode memory
- * CNC Aluminum heat sink casing
- * USB remote control system
- * External battery pack
- * Over heat protection system
- * Quick release handlebar mount
- * Quick release helmet mount
- * Low battery, charging and fully charged indicator
- * Automatic fully charged cut-off system
- * Water resistant (IPX 7)
- * Water resistant USB port
- * Lock mode
- * Variable lumen system
- * FL-1 tested lumen
- * FL-1 tested runtime
- * FL-1 tested beam distance

CONTENTS INCLUDED

- RB-41 (Helmet Mount)
- RB-36 (Handlebar Centre Mount)
- USB-C (USB Type-C cable)
- USB-CTC (USB-C To USB-C Cable)
- USB-C-RMS2020 (USB-C Remote Control)
- EXC (Extension Cable)
- XP-BSM-0813 (Velcro Band)
- BS-S4 (External Battery Pack)

OPERATION



ON / OFF : Press 1s

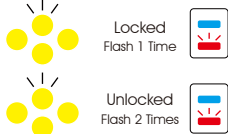
MODE SELECT : Click

STEADY / FLASH : Press and hold 3s

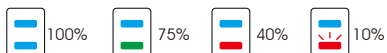
BOOST MODE : Double click

LOCK/UNLOCK : 1. Power off

2. Press 5s:



BATTERY INDICATOR :



* Lock system:

Lock the light to prevent accidentally turned on.

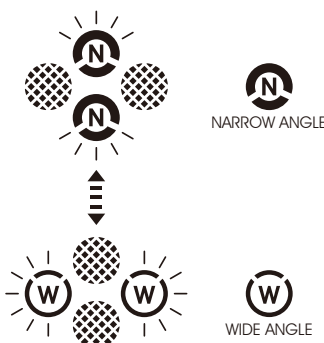
* Mode memory:

The light resumes previous mode upon next usage.

DUAL ANGLE BEAM

Dual Angle beam is designed for user to select wide or narrow angle beam for different road section.

BEAM ANGLE SELECT: Click



RUNTIME



	BOOST	MODE1	MODE2	MODE3	FLASH1	FLASH2	DAY FLASH	SOS
DEFAULT LUMEN	4000	3000	1500	750	100	200	400	100
H-MIN	2:00	2:30	5:30	12:00	200:00	110:00	300:00	100:00
VLS LUMEN	-	3000-100	3000-100	3000-100	4000-50	4000-50	4000-50	-
H-MIN	-	2:30-94:00	2:30-94:00	2:30-94:00	13:00-500:00	18:00-80:00	49:00-800:00	-



	BOOST	MODE1	MODE2	MODE3	FLASH1	FLASH2	DAY FLASH	SOS
DEFAULT LUMEN	2200	1300	1000	500	50	100	200	50
H-MIN	4:00	7:00	10:00	21:00	320:00	160:00	400:00	170:00
VLS LUMEN	-	1500-50	1500-50	1500-50	2200-20	2200-20	2200-20	-
H-MIN	-	6:00-140:00	6:00-140:00	6:00-140:00	25:00-600:00	35:00-120:00	97:00-1400:00	-



	BOOST	MODE1	MODE2	MODE3	FLASH1	FLASH2	DAY FLASH	SOS
DEFAULT LUMEN	2200	1300	1000	500	50	100	200	50
H-MIN	4:00	7:00	10:00	21:00	320:00	160:00	400:00	170:00
VLS LUMEN	-	1500-50	1500-50	1500-50	2200-20	2200-20	2200-20	-
H-MIN	-	6:00-140:00	6:00-140:00	6:00-140:00	25:00-600:00	35:00-120:00	97:00-1400:00	-

HEAT CONTROL SYSTEM

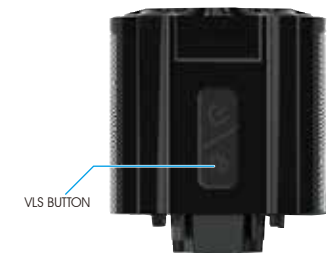
OVERHEAT PROTECTION

The overheat protection device can ensure the bicycle light in a good running temperature condition, so that to protect the LEDs without burning case. If the light is in high temperature during operation, it will dim the light output.

The high brightness LED will heat up the light body while working. The Air Vent Cooling System lets air flows through the light body, which will reduce the heat generated by the running LEDs. The good cooling system maintains better LED performance and overall reliability of the light.



FRONT VIEW



1. Select desired mode.
2. Press and hold to set lumen.
3. Release when reaching desired lumen.

* Light flashes once when reaching the MAX or MIN lumen level.



* Restore default mode:

Press +

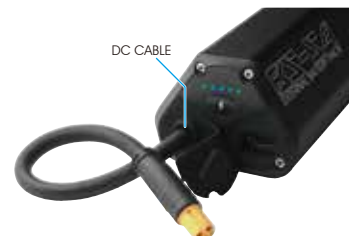


* Mode memory:

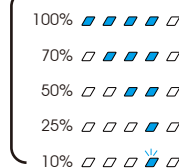
The light resumes previous VLS setting upon next usage.

BATTERY CONNECTION

Plug in the DC cable to connect with light.



Battery Indicator (Running)



BS-S4 (PD3.0/ QC3.0/ PPS 18W Max.)
INPUT : (USB-C) 5V/3A; 9V/2A; 12V/1.5A Max.
OUTPUT : (DC PLUG) 7.26V/6A (USB-C) 5V/3A; 9V/2A; 12V/1.5A Max.
RATING : 7.2V 6700mAh 48.24Wh

* Make sure to power off the light before unplugging the DC cable

BATTERY CAPACITY

Press to show the battery capacity.



POWER SUPPLY

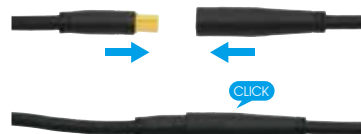
1. Unplug the DC cable
 2. Plug in the USB-CTC cable to the battery.
 3. Plug the USB-CTC to the device to be charged.
 4. Unplug the cable after charging.
- * Do not charge any device without global safety standard.
* Close the cover when not in use.
* Keep away from flammable objects while charging.



Power Output Indicator
Battery Level
Charging

Quick Charge Power Output Indicator
Battery Level
Charging

EXTENSION DC CABLE



BATTERY CHARGING

1. Power off.
 2. Plug USB cable to USB port.
 3. Unplug after fully charged.
- * Close the cover when not in use
* Keep away from flammable objects.

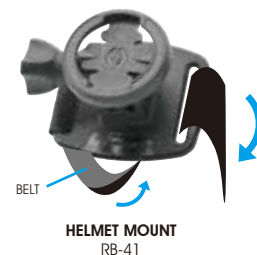
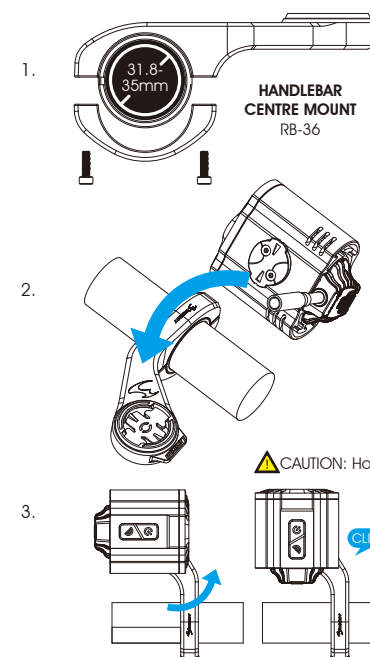


Charging Indicator (Input)
10%
25%
50%
70%
100%

Quick Charge Indicator (Input)
10%
25%
50%
70%
100%

No Power Input Detected

BRACKET MOUNTING



BATTERY MOUNTING



REMOTE CONTROL



1. Open the light USB port cover.
 2. Plug in the remote control cable.
- * Unplug the cable and close the port cover when not in use.
* Do not plug in other USB cable or charger.

WARNING

- * Understand country lighting laws and regulations before use.
- * Do not shine light directly into eyes.
- * Do not mount near wireless computer.
- * Do not blind the oncoming vehicles. Always adjust the angle downward.
- * Do not submerge the light into water.
- * Keep light in cool and dry place when storing.
- * Fully recharge the light at least every 3 months during storage.
- * After 300 charge/discharge cycles, the battery capacity may become less effectiveness to around 80%.
- * Do not dismantle the battery case.
- * Do not charge except specified charging condition.
- * Keep battery away from fire and combustible materials.
- * Do not heat above 60°C or short circuit.

WARRANTY

MOON lights are covered by a **ONE YEAR LIMITED WARRANTY** while MOON batteries are covered by **120 days** warranty from the date of purchase. This warranty covers the defects in material and workmanship only with proof of purchase. Please contact original dealer for warranty service. For lights bought on MOON website, please contact cs@moon-sport.com for help.

ONLINE WARRANTY REGISTRATION
Visit www.moon-sport.com for online warranty registration.