



The light is locked for shipment, refer to OPERATION instruction to unlock. Read this manual carefully before using and keep for future reference. Visit www.moon-sport.com for manual updates.

CONTENTS



HELIX LITE-W MANUAL

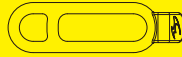


HELIX LITE-W

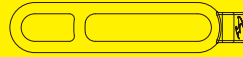


RB-37-W (HANDLEBAR BRACKET)

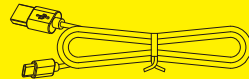
STRAPS



RS-I
20-35 mm

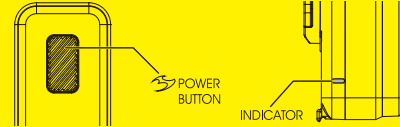


RS-J
35-52 mm



USB-C (USB CABLE)

OPERATION



ON / OFF : Press 1s

MODE SELECT : Click

STEADY / FLASH : Double Click

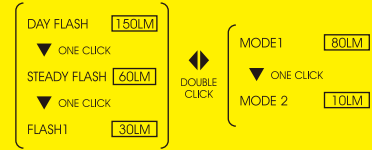
LOCK/UNLOCK : 1, Power off

2, Press 6s: Locked FLASH 2 TIMES

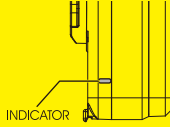
Unlocked FLASH 2 TIMES

* Lock system: Lock the light to prevent accidentally turned on,

* Mode memory: The light resumes previous mode upon next usage,



VARIABLE LUMEN SYSTEM



1. Select desired mode,
2. Press and hold to set lumen,
3. Release when reaching desired lumen.

* Light flashes twice when reaching the MAX or MIN lumen level.

* Restore default mode: 1. Power off

2, Press 10s: FLASH 3 TIMES

AUTO SAFE MODE



Quick Flash

To preserve battery when power is low, the light will enter safe mode with less light output for extra **45mins**. Safe mode cannot be override. Recharge battery for maximum performance.

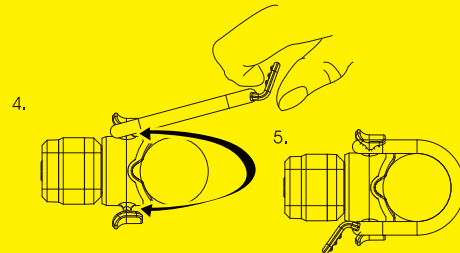
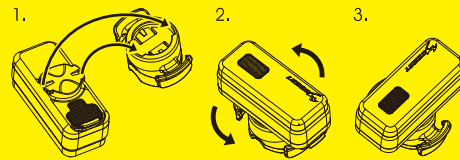
RUNTIME

	ANSI FL1	DAY FLASH	STEADY FLASH	FLASH 1	MODE1	MODE2
DEFAULT	LUMEN	150	7 + 60	30	80	10
	H:MIN	19:30	15:30	26:00	2:10	17:30
	LUMEN	150-10	150-10	150-10	80-10	80-10
	H:MIN	19:30-102:00	10:00-23:00	6:00-58:00	2:10-17:30	2:10-17:30

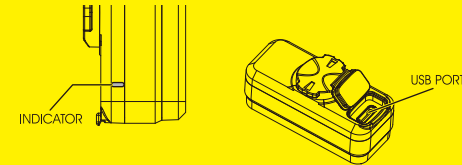
DEPENDS ON MODE LUMENS

MOUNTING

HANDLEBAR MOUNTING



CHARGING



CHARGING

1. Power off
2. Plug USB-C cable to USB-C port
3. Unplug after fully charged

* Do not charge over 5V.

* Keep away from flammable objects while charging.

INDICATOR



WARNING

Understand country lighting laws and regulations before use.
Do not shine light directly into eyes.
Do not mount near wireless computer.
Do not blind the oncoming vehicles. Always adjust the angle downward.
Do not submerge the light into water.
Keep light in cool and dry place when storing.
Fully recharge the light at least every 3 months during storage.

WARRANTY

MOON lights are covered by a ONE YEAR LIMITED WARRANTY while MOON batteries are covered by 120 days warranty from the date of purchase. This warranty covers the defects in material and workmanship only with proof of purchase. Please contact original dealer for warranty service. For lights bought on MOON website, please contact cs@moon-sport.com for help.

ONLINE WARRANTY REGISTRATION

Visit www.moon-sport.com for online warranty registration.